

TAKING YOU TO NEW HEIGHTS IN SAFETY...



one bay stair unit



Designed to be used with Kwikstage scaffolding equipment, One Bay from Alsure offers a very easy to handle Stair Unit that provides safe access and egress in compliance with current legislation.

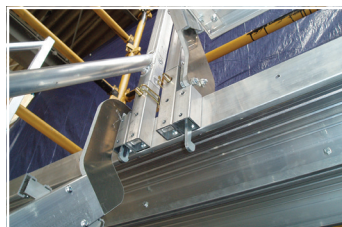


Benefits

- 8' Bay Length.
- 1.5m and 2.0m lift heights available. Provides versatility to suit maximum number of applications.
- **NEW** 1.0m top lift giving maximum platform versatility.
- Bolted construction eliminates the risk of weld cracking and ultimate failure.
- Allows for simple on-site maintenance, which dramatically increases utilisation and eliminates expensive repairs, giving lower ownership costs.
- All components easily handled by one person, therefore keeping labour costs down.
- Erected in a single 8' x 6' bay, eliminating the need for Return Transom bays, which reduces the amount of support scaffolding by more than ¼ tonne for every 2.0m lift, and also giving major savings on labour costs and transport.
- **NEW** Folding Aluminium Toeboard Set available

Safety Will Always Come First

- ✓ Aluminium bolted construction to all structural joints.
- ✓ **NEW** Auxiliary Platform Set dramatically increases safety of build sequence.
- ✓ All components weigh less than 25 kilos.
- ✓ Deep non-slip treads throughout.
- ✓ Fully interlocking system.
- ✓ Complies to BS EN 12811-1:2004.
- ✓ All connections are visible - making inspection 100% certain.



To find out how to improve your access safety and still reduce costs simply call **0121 666 6070** and ask for more details